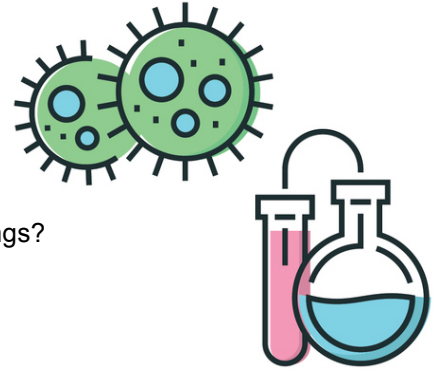


Science Trivia For Kids

Biology Questions:

1. Biology is the study of what?
 - a. Dead things
 - b. Earth
 - c. Living things
 - d. Plants
2. What are considered the basic building blocks of all living things?
 - a. Cells
 - b. Atoms
 - c. Electrons
 - d. Organisms
3. When was the first microscope invented?
 - a. 1600s
 - b. 1900s
 - c. 2000s
 - d. 1200s
4. Which scientist is called the Father of Biology?
 - a. Galileo
 - b. Einstein
 - c. Newton
 - d. Aristotle
5. True or False? Plant cells have a cell wall while animal cells do not.
6. True or False? A microbiologist studies the largest living things in the world.
7. True or False? An autotrophic organism eats other things.
8. True or False? An organism can exist without a nucleus.



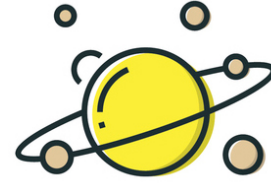
Geology Questions:

9. Which of the following is NOT a layer of the Earth?
 - a. Crust
 - b. Plate
 - c. Mantle
 - d. Outer core
10. What are igneous rocks made out of?
 - a. Smaller rocks
 - b. Salt
 - c. Crystals
 - d. Sand
11. Which type of map shows the physical appearance of a land area?
 - a. Topographic
 - b. Marine
 - c. Thematic
 - d. Road
12. What is stratigraphy the study of?
 - a. Clouds
 - b. Layer of the Earth
 - c. Rock layers
 - d. The stratosphere



13. True or False? Geology is the study of rocks.
14. True or False? The mantle is the thickest layer of the Earth.
15. True or False? There are five different types of rock in the world.
16. True or False? The only difference between a diamond and pencil lead is how the pattern of the crystals that make them.

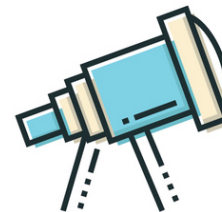
Meteorology Questions:



17. Which instrument measures air pressure?
 - a. Barometer
 - b. Thermometer
 - c. Anemometer
 - d. Hygrometer
18. What is the name of the type of calendar that uses weather and astronomical data to forecast?
 - a. Almanac
 - b. Lunar calendar
 - c. Gregorian
 - d. Dreamspell
19. Which is NOT a type of meteorologist?
 - a. Climatologist
 - b. Synoptic
 - c. Environmental
 - d. Hydrologist
20. Which of these is most responsible for the weather on Earth?
 - a. The moon
 - b. The sun
 - c. People
 - d. Oceans
21. True or False? The earth's atmosphere is made up of three layers.
22. True or False? A tornado watch is worse than a tornado warning.
23. True or False? The troposphere is the lowest part of the Earth's atmosphere.
24. True or False? Temperature can be measured on two different scales.

Astronomy Questions:

25. Astronomy is the study of what?
 - a. The Milky Way
 - b. The Planets
 - c. Air
 - d. All objects outside Earth's atmosphere
26. Which is NOT a type of astronomer?
 - a. Stellar
 - b. Galactic
 - c. Solar
 - d. Astrological
27. What is the galaxy you live in called?
 - a. The Milky Way
 - b. Orion's Belt
 - c. Andromeda
 - d. Triangulum



28. Which is NOT a tool used in astronomy?

- a. Spectrometer
- b. Scale
- c. Telescope
- d. Neutrino detector



29. True or False? Everything that exists anywhere is in the universe.

30. True or False? Large objects have greater gravity than small objects.

31. True or False? The sun is about 15 trillion years old.

32. True or False? There are eight planets in your solar system.

General Science Questions:

33. Which of the following is NOT part of the scientific method?

- a. Hypothesis
- b. Analysis
- c. Experimentation
- d. Manipulation

34. The word "scientist" was first used in what time period?

- a. 1800s
- b. 1900s
- c. 2000s
- d. 1200s

35. Which is NOT a branch of science?

- a. Physical science
- b. Earth science
- c. Emotional science
- d. Life science



36. The word "science" actually means?

- a. Study
- b. Knowledge
- c. Experiment
- d. Alive

37. True or False? The main difference between a theory and a law is that the police deal with laws.

38. True or False? All types of science explore the natural world.

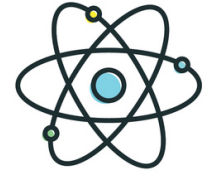
39. True or False? All scientists work in laboratories.

40. True or False? Kids who collect and analyze data to help professional scientists are called citizen scientists.

Science Trivia Answers

Biology Answers:

1. C. Biologists study plants, animals, and anything that is alive in the universe.
2. A. All living things are made up of one or more cells.
3. A. Anton von Leeuwenhoek invented the first one in 1673.
4. D. Aristotle was a Greek philosopher and early scientist in the 300s B.C.
5. True. The cell wall makes it easier for scientists to identify plant cells.
6. False. Microbiologists study the smallest living things like viruses.
7. False. Autotrophic organisms can make their own food.
8. True. Organisms like bacteria don't have a nucleus and they do a lot of work.



Geology Answers:

9. B. The Earth's layers include the core, mantle, outer core, and inner core.
10. C. Igneous rocks form when magma cools and crystalizes.
11. A. A topographic map uses special lines to show things like hills or mountains.
12. C. Stratigraphists look at how rock layers are formed.
13. False. Geology is the study of the Earth.
14. True. The mantle is about 1800 miles thick.
15. False. There are only three types of rock: igneous, metamorphic, and sedimentary
16. True. Diamonds and pencil lead are both made from only carbon.

Meteorology Answers:

17. A. It tells you whether the air pressure is rising or falling.
18. A. Almanacs are published each year with predictions for the following year.
19. D. There are six basic types of meteorologists.
20. B. Even though the sun is far away, it's heat gives Earth's atmosphere the energy to move.
21. False. The atmosphere is made up of five layers.
22. False. A watch means the conditions are good for making a tornado while a warning means one is happening.
23. True. It contains about 75 percent of the atmosphere's mass.
24. False. It can be measured in Fahrenheit, Kelvin, or Celsius.

Astronomy Answers:

25. D. Astronomy includes studying planets, stars, and all other matter in the universe.
26. D. Astrology is not considered a science.
27. A. The Milky Way is only one of billions of galaxies.
28. B. Astronomers rely on lots of instruments because most things in space can't be seen by the naked eye.
29. True. No one knows just how big the universe actually is.
30. True. An example would be how the Earth's gravitational pull keeps you on the ground.
31. False. The sun is about 5 billion years old.
32. True or False? True. Pluto is now considered a dwarf planet instead of a regular planet.

General Science Answers:

33. D. The scientific method steps are: Question, Research, Hypothesis, Experiment, Collect Data, Analysis, Conclusion.
34. A. William Whewell was the first to use the word in 1834.
35. C. All types of science fit into three main categories.
36. B. The word "scientia" in Latin means "knowledge."
37. False. In science a theory changes frequently with new discoveries while a law doesn't change because it is based on solid and repeated evidence.
38. True. Scientists cannot study supernatural forces.
39. False. Many scientists collect data and make observations outdoors.
40. True. Anyone who help working scientists collect or analyze data is a citizen scientist.

