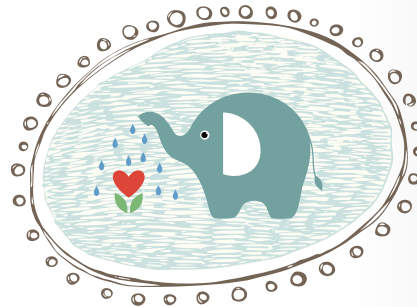


Quick, Name a Nursery Rhyme!

Directions: You have five minutes to name nursery rhymes that contain the things listed on the right side of the page. You can use the Nursery Rhymes listed in the Nursery Rhyme Bank or others you are familiar with.

Nursery Rhyme Bank:

- Alice the Camel
- Alphabet Song
- Baa Baa Black Sheep
- Baby Bumblebee
- Brahms Lullaby
- Brother John
- Five Little Monkeys
- Hey Diddle Diddle
- Hickory Dickory Dock
- Hush, Little Baby
- I'm a Little Teapot
- Itsy Bitsy Spider
- Mary Had a Little Lamb
- Pat-a-Cake
- Rock-a-Bye Baby



Name a Nursery Rhyme That:



- Features a bug _____
- Includes at least two different animals _____
- Counts no higher than 5 _____
- Helps baby go to sleep _____
- Talks about food _____
- Features water _____
- Includes hand motions _____
- Says the word "Baby" _____
- Says the number "Ten" _____
- Talks about someone old _____
- Is about a girl _____
- Is about a boy _____

